



बिजया दशमी २०७६ को शुभकामना ।

COMPANY INTRODUCTION

Setting new standards with the introduction of NEPAL STANDARD (NS) for Pavers and Kerbstones by Nepal Bureau of Standards and Metrology; Asian Concreto is Nepal's first Company to manufacture Nepal Standard Certified Paver and Kerbstones and also is Nepal's largest company in the concrete landscaping industry. Located strategically in the western part of Nepal in Nawalparasi, Asian Concreto produces an extensive range of superior grades concrete landscaping products such as concrete pavers, tiles, bricks, hollow blocks, and kerbstones. With the products being available in a large variety of colors, patterns, and designs to cater to a vast range of clients, the products are suitable for all kinds of architectural, residential, commercial, industrial & institutional projects. Asian Concreto's state-of-the-art German plant makes the entire process of production and quality control completely automated ensuring that the products are produced in high strength, quality, accuracy, and design. Incorporating the latest technology and business practices, Asian Concreto goes above and beyond the current market trend and competition by ensuring stylish, modern, and durable outdoor paving solutions. Asian Concreto is committed to providing quality products, prompt delivery, and active involvement in the projects till their entire completion. All of our concrete paving products are crafted to the highest quality to ensure years of enjoyment. This gives you the peace of mind to know that your Asian Concreto's product will last for years to come.

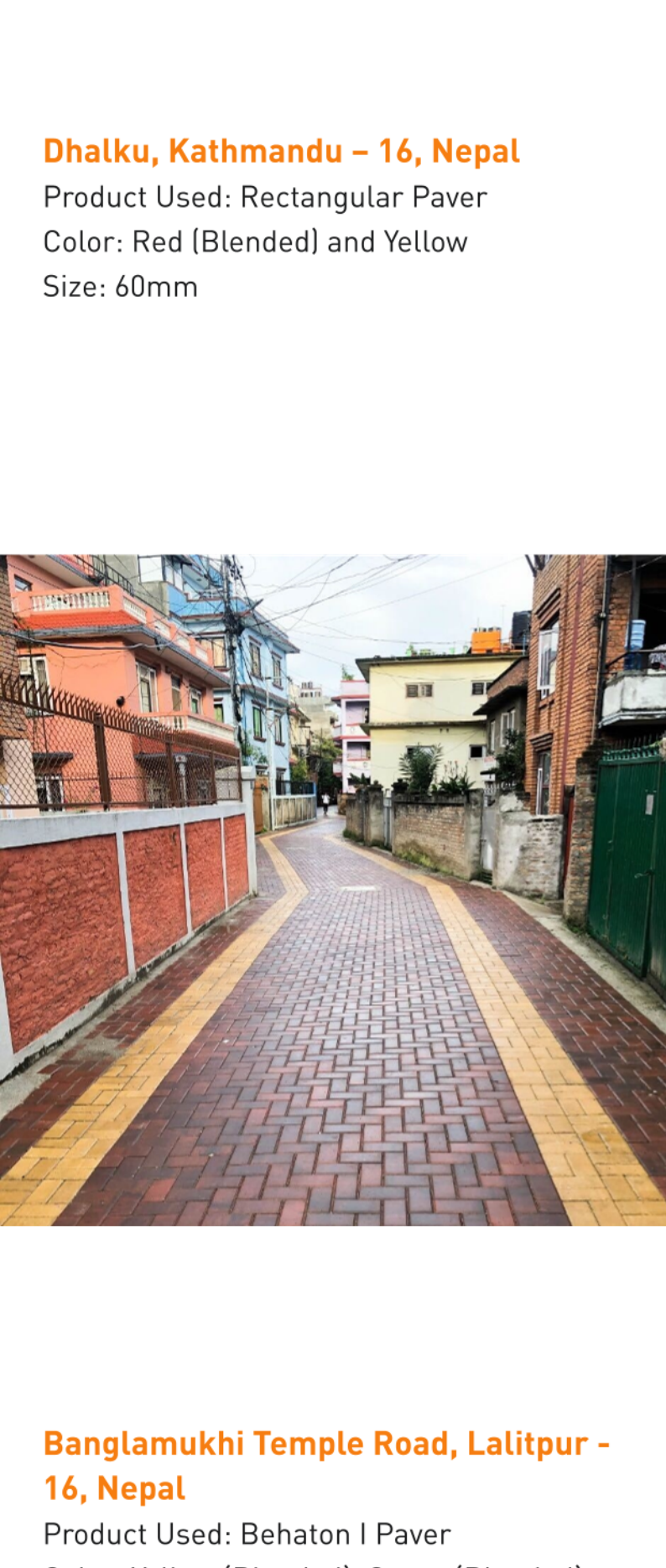
ASIAN PAVERS BEST CHOICE FOR COMMUNITY ROADS

Asian Pavers are not only been used for house exterior or for a footpath, but it is also getting popular for township roads special in Kathmandu and Lalitpur narrow ally roads. As we can see these days Kathmandu's footpath is reconstructed and renovated for more accessibility for pedestrians. Along with the improved footpath the department of roads and local government has also focused on the beautification and durability of newly constructed pathways. All most all the projects have used Asian Pavers and Asian Kerbstone for their unbeatable quality, unlimited product variety, and incomparable product delivery service.

The reason for Asian Paver's popularity for community roads in Kathmandu:

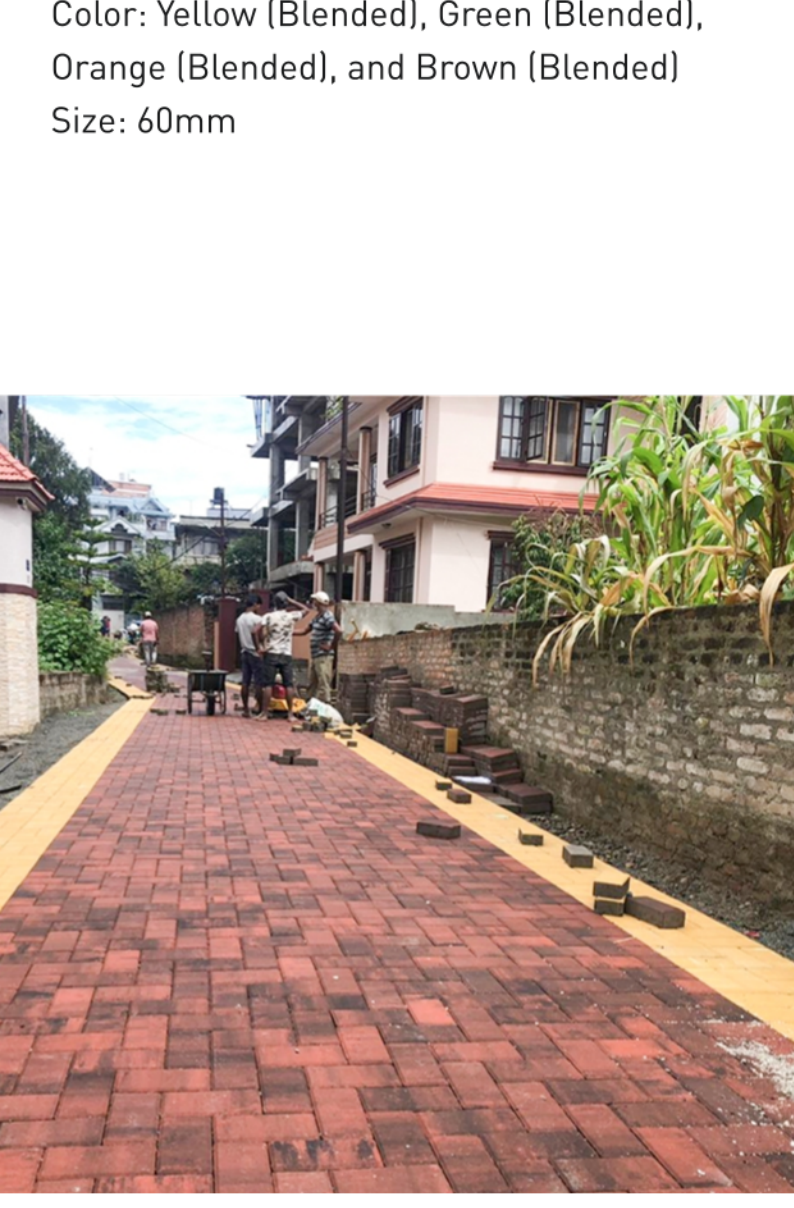
- Community roads with Asian Pavers have many advantages over asphalt roads, creating an infrastructure that carries the traffic at an acceptable level of comfort and safety and built at an acceptable cost.
- Asian Pavers can be individually shaped blocks arranged to form a hard surface overlay that can last for decades with little or no maintenance being necessary. It is designed to endure the highest stresses of traffic. The blocks come in various designs and colors.
 - Long-lasting
 - Hard wearing surface
 - No Potholes
 - Virtually maintenance-free
 - 100% Made in Nepal
- From the environmental aspect, Asian Pavers are aesthetically attractive, have no dust issues, no vehicle damage, and reusability of Asian pavers.
- Asian Pavers have a compressive strength greater than 35 Mpa, which can easily sustain and bear a load of vehicles up to 22 tons.
- Asian Interlocking Pavers also help in water recharge in the ground which can be a great solution considering the degrading groundwater level in Kathmandu.
- Besides the above-mentioned benefits, Asian Concreto has been producing customized products considering the cultural and traditional aspects of the valley.

SOME GLIMPSE OF COMMUNITY ROADS IN KATHMANDU VALLEY



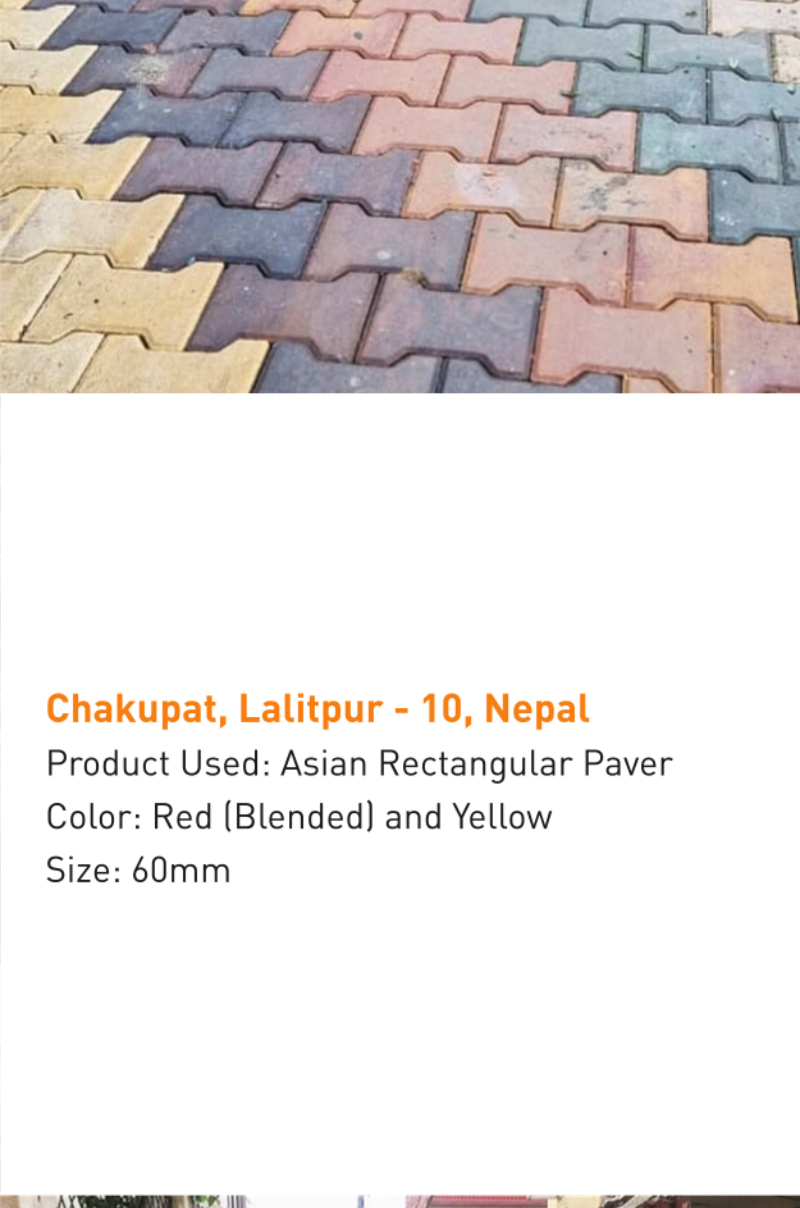
Thaiti Chowk, Kathmandu MC - 17, Nepal

Product used: Asian Rectangular Pavers
Color: Red (Blended), Black and Pink (Blended)
Size: 60mm



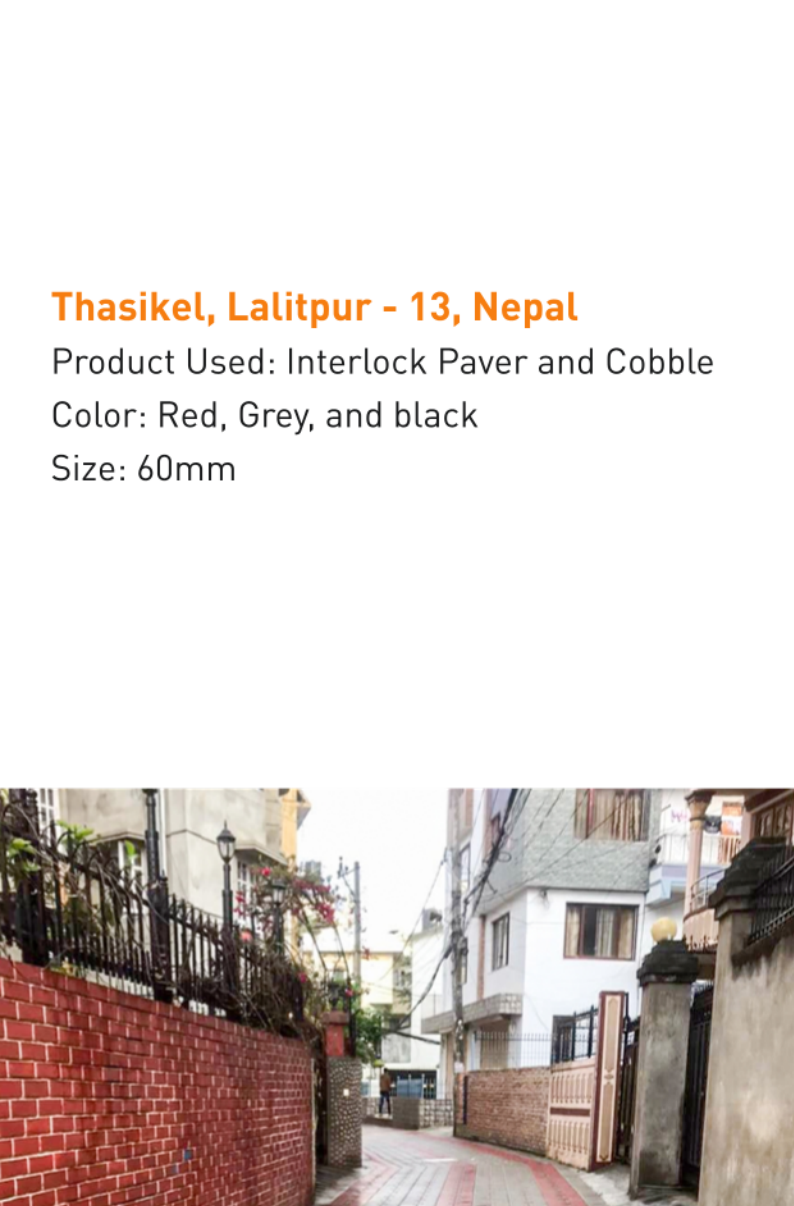
Dhalaku, Kathmandu - 16, Nepal

Product Used: Rectangular Paver
Color: Red (Blended) and Yellow
Size: 60mm



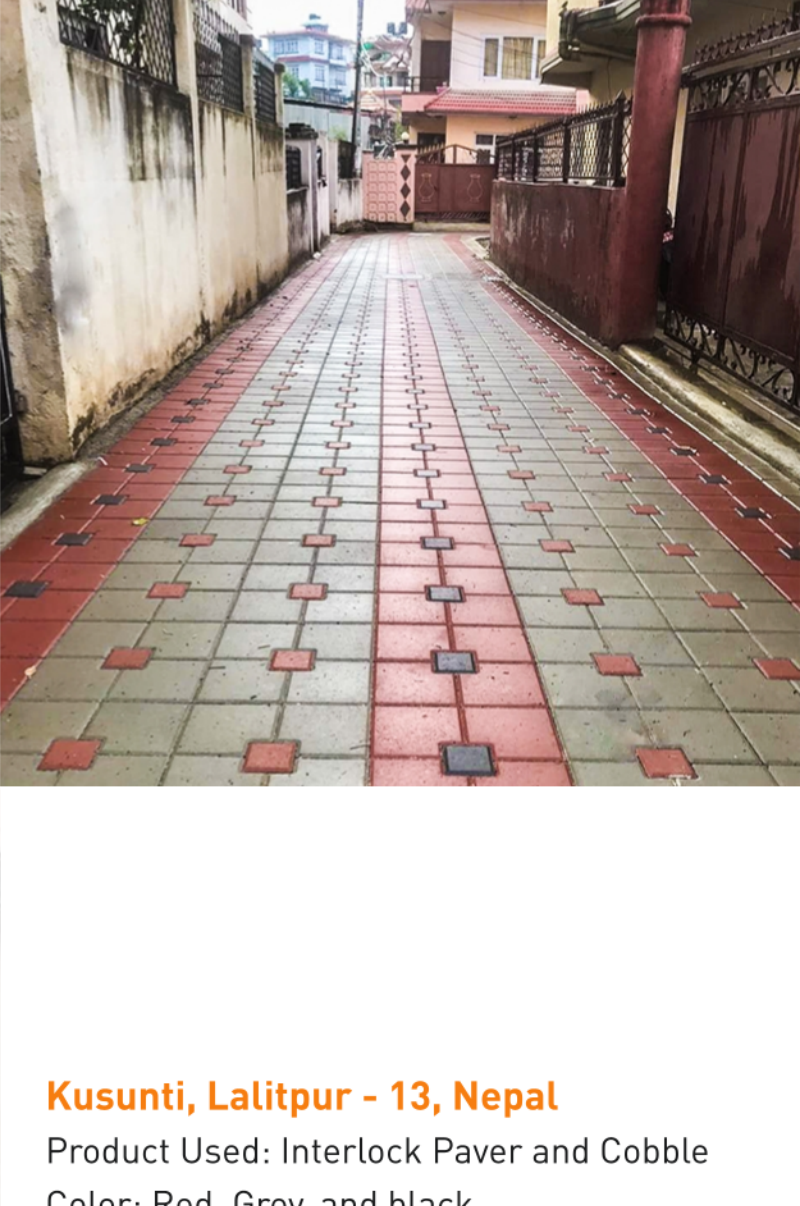
Kupandole, Lalitpur - 1, Nepal

Product Used: Rectangular Paver
Color: Red (Blended) and Yellow
Size: 60mm



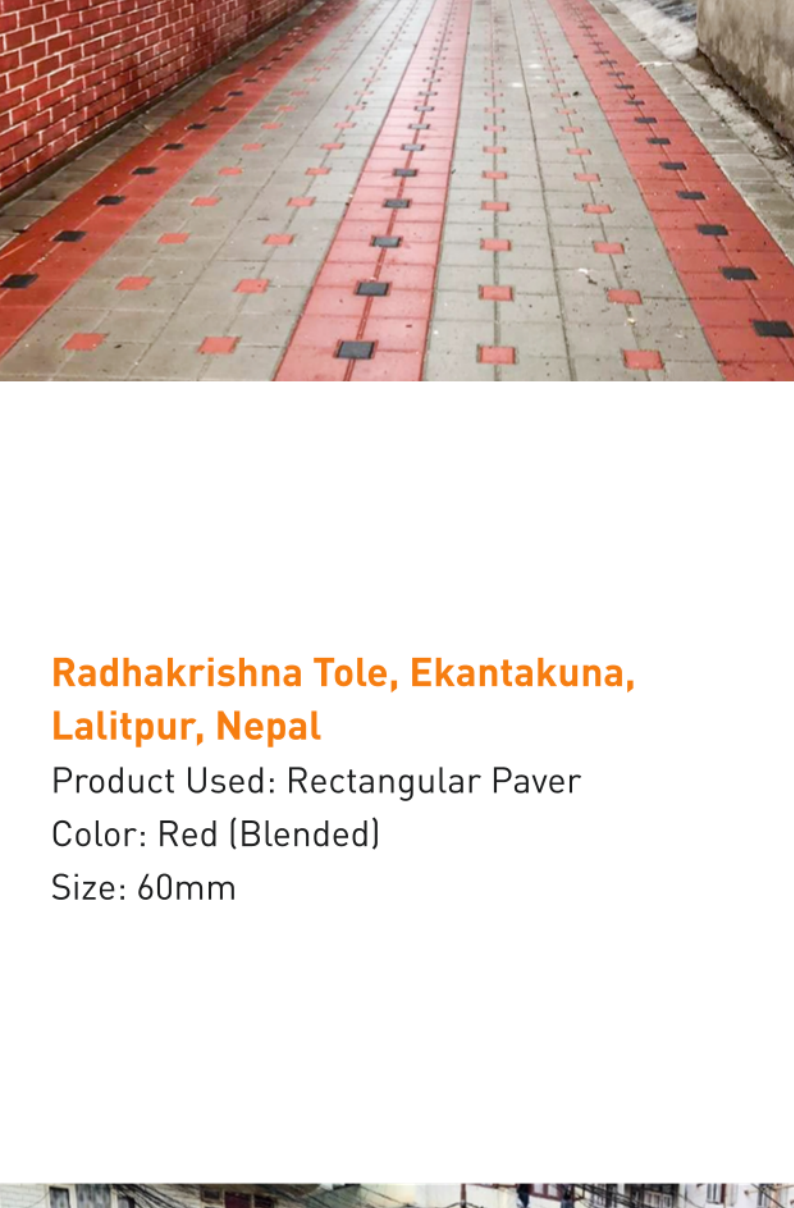
Banglamukhi Temple Road, Lalitpur - 16, Nepal

Product Used: Behaton I Paver
Color: Yellow (Blended), Green (Blended), Orange (Blended), and Brown (Blended)
Size: 60mm



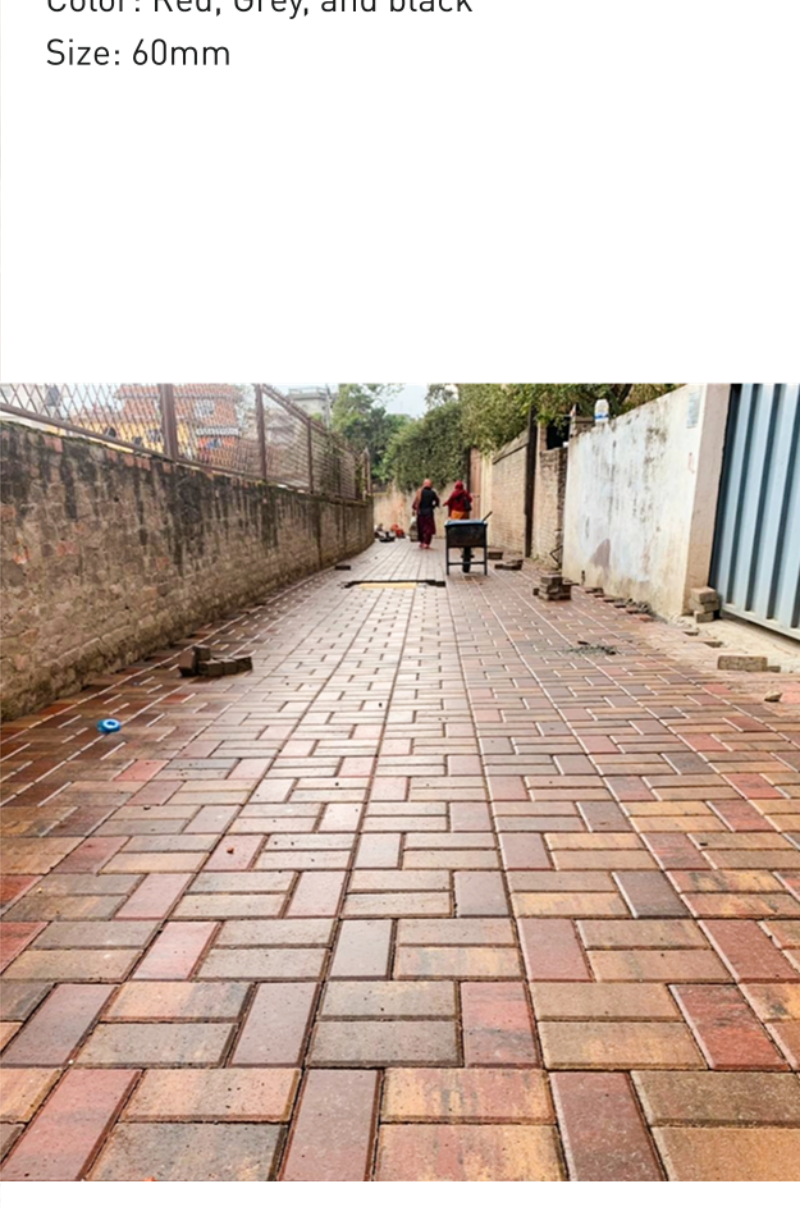
Chakupat, Lalitpur - 10, Nepal

Product Used: Asian Rectangular Paver
Color: Red (Blended) and Yellow
Size: 60mm



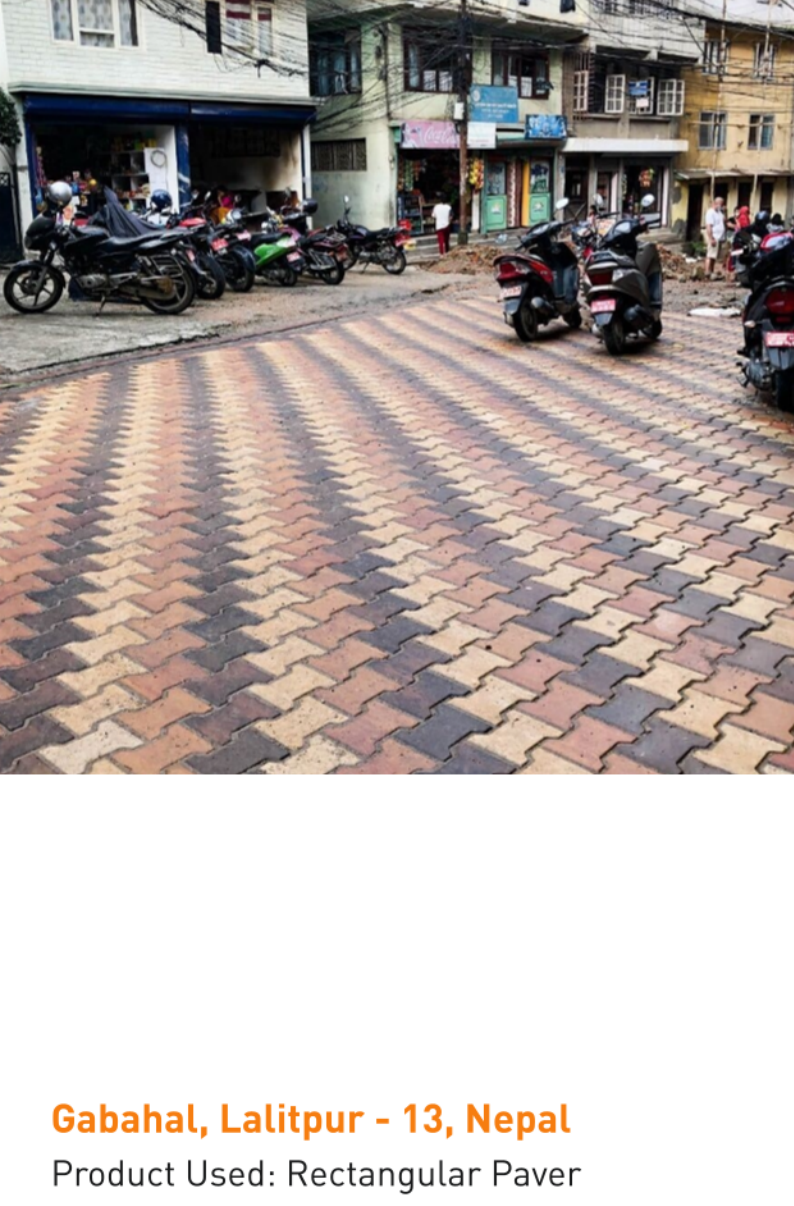
Thasikel, Lalitpur - 13, Nepal

Product Used: Interlock Paver and Cobble
Color: Red, Grey, and black
Size: 60mm



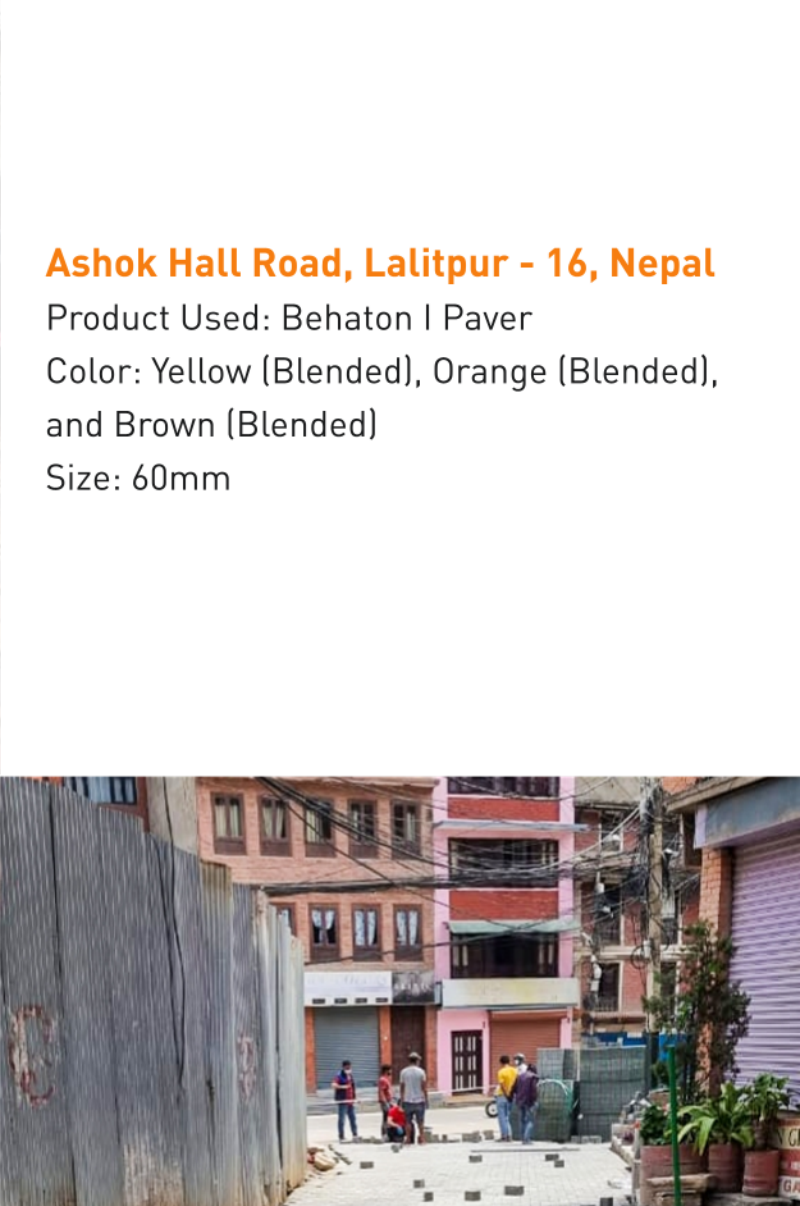
Kusunti, Lalitpur - 13, Nepal

Product Used: Interlock Paver and Cobble
Color: Red, Grey, and black
Size: 60mm



Radhakrishna Tole, Ekantakuna, Lalitpur, Nepal

Product Used: Rectangular Paver
Color: Red (Blended)
Size: 60mm



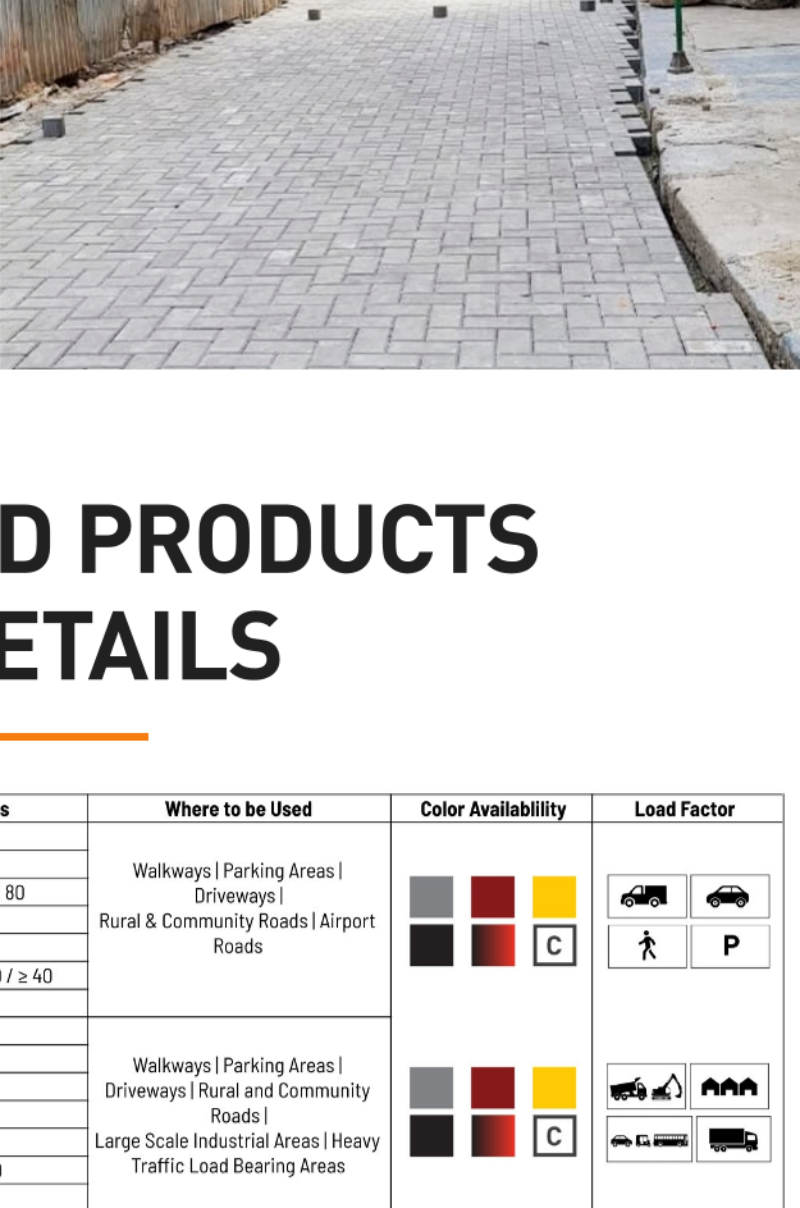
Ashok Hall Road, Lalitpur - 16, Nepal

Product Used: Behaton I Paver
Color: Yellow (Blended), Orange (Blended), and Brown (Blended)
Size: 60mm



Gabahal, Lalitpur - 13, Nepal

Product Used: Rectangular Paver
Color: Grey
Size: 100mm



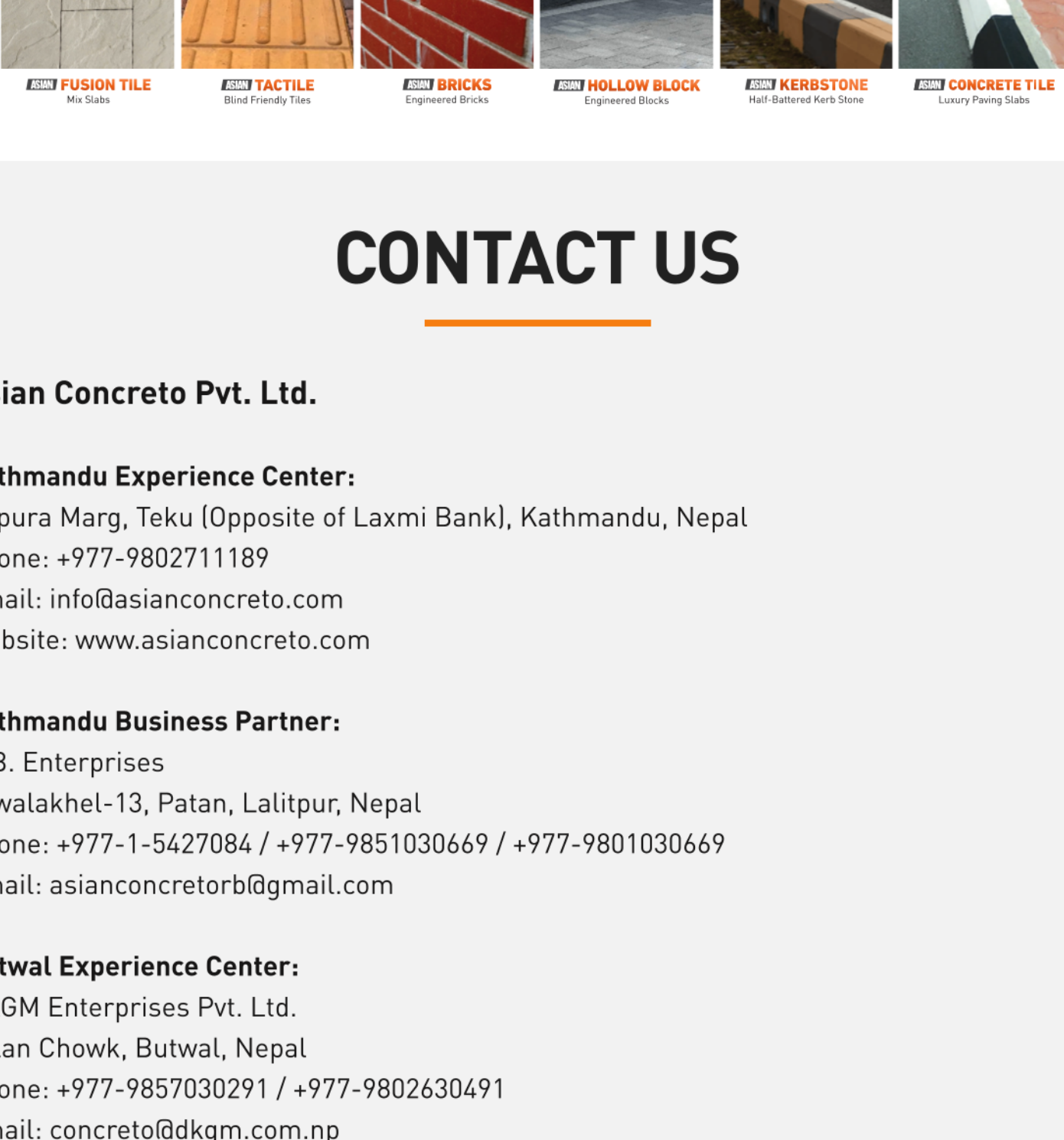
Ashok Hall Road, Lalitpur - 16, Nepal

Product Used: Behaton I Paver
Color: Yellow (Blended), Orange (Blended), and Brown (Blended)
Size: 60mm

NS CERTIFIED PRODUCTS AND DETAILS

S.N.	NS Certified Products	Parameters	Dimensions	Where to be Used	Color Availability	Load Factor
1	Asian Hexagon	Length (mm): 226 Width (mm): 200 Thickness (mm): 50 / 60 / 70 / 80 Pavers/m ² : 29.85 Pavers/ft ² : 2.76 Compressive Strength (N/mm ²): ≥ 30 / ≥ 35 / ≥ 40 / ≥ 40	226 200	Walkways Parking Areas Driveways Rural & Community Roads Airport Roads	Color Availability: C	Load Factor: P
2	Asian Behaton	Length (mm): 200 Width (mm): 165 Thickness (mm): 50 / 60 Pavers/m ² : 36.23 Pavers/ft ² : 3.42 Compressive Strength (N/mm ²): ≥ 30 / ≥ 40	200 165	Walkways Parking Areas Driveways Rural and Community Roads Large Scale Industrial Areas Heavy Traffic Load Bearing Areas	Color Availability: C	Load Factor: P
3	Asian Rectangular	Length (mm): 200 Width (mm): 100 Thickness (mm): 60/100 Pavers/m ² : 4.85 Pavers/ft ² : 4.85 Compressive Strength (N/mm ²): ≥ 35 / ≥ 50	200 100	Sidewalks Walkways Parks Patios Driveways Housing Colonies Service Roads Dock Yards Ports Terminal Roads	Color Availability: C	Load Factor: P
4	Asian Interlock	Length (mm): 200 Width (mm): 200 Thickness (mm): 60 Pavers/m ² : 28.66 Pavers/ft ² : 2.47 Compressive Strength (N/mm ²): ≥ 35	200 200	Sidewalks Walkways Parks Patios Driveways	Color Availability: C	Load Factor: P
5	Asian Cobble	Length (mm): 100 Width (mm): 100 Thickness (mm): 50 Pavers/m ² : 9.29 Pavers/ft ² : 9.29 Compressive Strength (N/mm ²): ≥ 35	100 100	Walkways Driveways Patios Garden Areas Pool Decks Terrace House Colonies	Color Availability: C	Load Factor: P
6	Asian Square	Length (mm): 200 Width (mm): 200 Thickness (mm): 60 Pavers/m ² : 2.32 Pavers/ft ² : 2.32 Compressive Strength (N/mm ²): ≥ 35	200 200	Walkways Driveways Patios Garden Areas Pool Decks Terrace House Colonies	Color Availability: C	Load Factor: P
7	Asian Unipaver	Length (mm): 240 Width (mm): 120 Thickness (mm): 60 Pavers/m ² : 34.72 Pavers/ft ² : 3.22 Compressive Strength (N/mm ²): ≥ 35	240 120	Parking Areas Driveways Rural and Community Roads Housing Colonies Large Scale Industrial Areas Heavy Traffic Load Bearing Areas	Color Availability: C	Load Factor: P
8	Asian Romba 3D	Length (mm): 340 Width (mm): 197 Thickness (mm): 60 Pavers/m ² : 2.68 Pavers/ft ² : 2.68 Compressive Strength (N/mm ²): ≥ 35	340 197	Walkways Parking Areas Driveways	Color Availability: C	Load Factor: P
9	Asian Grass Paver	Length (mm): 600 Width (mm): 400 Thickness (mm): 80 Pavers/m ² : 4.36 Pavers/ft ² : 4.36 Compressive Strength (N/mm ²): ≥ 40	600 400	Sidewalks Walkways Parks Patios Driveways	Color Availability: C	Load Factor: P
10	Asian Nostalgic	Length (mm): 1167 Width (mm): 944 Thickness (mm): 60 Coverage Area Per Set (m ²): 1.09 Coverage Area Per Set (ft ²): 11.75 Compressive Strength (N/mm ²): ≥ 35	1167 944	Sidewalks Walkways Parks Patios Landscaping	Color Availability: C	Load Factor: P
11	Asian Zigzag	Length (mm): 225 Width (mm): 112.5 Thickness (mm): 80 Pavers/m ² : 3.67 Pavers/ft ² : 3.67 Compressive Strength (N/mm ²): ≥ 40	225 112.5	Parking Areas Driveways Rural and Community Roads Housing Colonies Large Scale Industrial Areas Heavy Traffic Load Bearing Areas	Color Availability: C	Load Factor: P
12	Asian Kerbstone	Length (mm): 250 / 300 / 300 Width (mm): 200 / 200 / 165 Thickness (mm): 380 / 350 / 325 Kerbs/ft: 4 / 3.33 / 3.33 Kerbs/ft: 1.2 / 1 / 1 Compressive Strength (N/mm ²): ≥ 20	250 / 300 / 300 200 / 200 / 165	Roadways Pathways Bordering Pathways Bordering Steps Bordering Flowerbeds	Color Availability: C	Load Factor: N/A

OUR PRODUCT LINE



CONTACT US

Asian Concreto Pvt. Ltd.

Kathmandu Experience Center:

Tripura Marg, Teku (Opposite of Laxmi Bank), Kathmandu, Nepal
Phone: +977-9802711189
Email: info@asianconcreto.com
Website: www.asianconcreto.com

Kathmandu Business Partner:

R.B. Enterprises
Jawatakhel-13, Patan, Lalitpur, Nepal
Phone: +977-1-5427084 / +977-9851030669 / +977-9801030669
Email: asianconcretorb@gmail.com

Butwal Experience Center:

DKGM Enterprises Pvt. Ltd.
Milan Chowk, Butwal, Nepal
Phone: +977-9857030291 / +977-9802630491
Email: concreto@dkgm.com.np

Chitwan Experience Center:

Om Sanjivani Concreto Concern
Bharatpur Height, Bharatpur, Nepal
Phone: +977-56-528700, +977-9801157400 / +977-985057400
Email: osccchitwan@gmail.com

Pokhara Experience Center:

Pokhara Concrete Concern Pvt. Ltd.
Fewa Lake Road, Shantinagar Chowk, Pokhara, Nepal
Phone: +977-9846764264 / +977-9856067070
Email: info@asianconcreto.com

Asian Concreto Factory:

Asian Concreto Pvt. Ltd.
Ramgram -16, Nawalparasi, Nepal
Phone: +977-9802711167
Email: info@asianconcreto.com
Website: www.asianconcreto.com

www.asianconcreto.com

Follow us on Asian Concreto Pvt. Ltd.

Made in Nepal